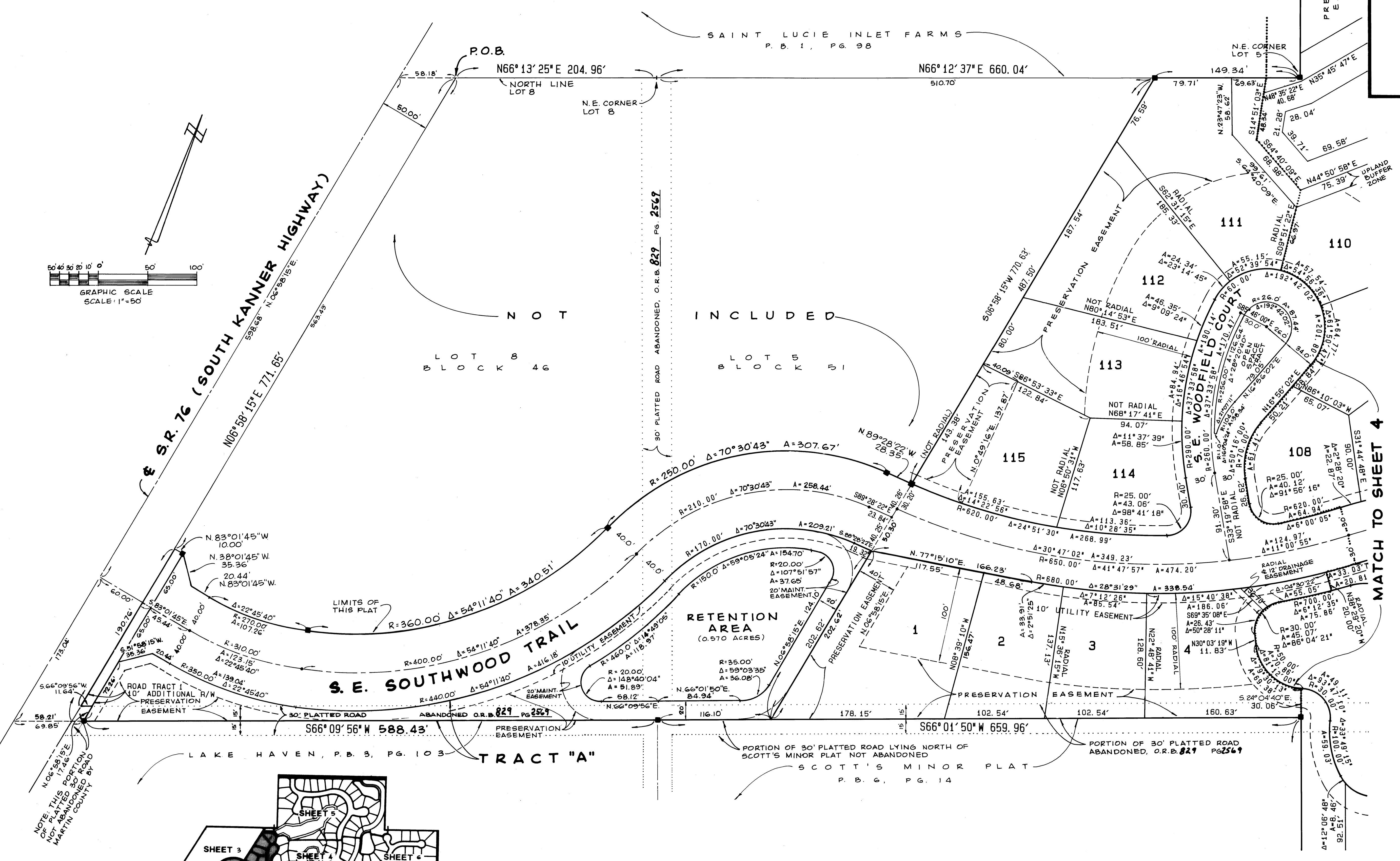
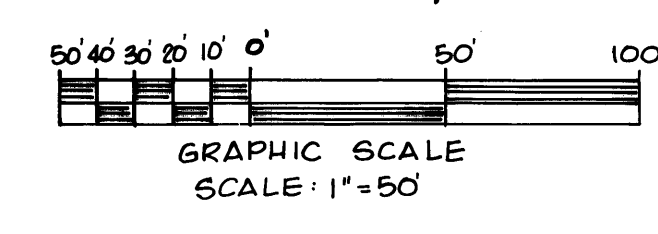


PLAT OF SOUTHWOOD

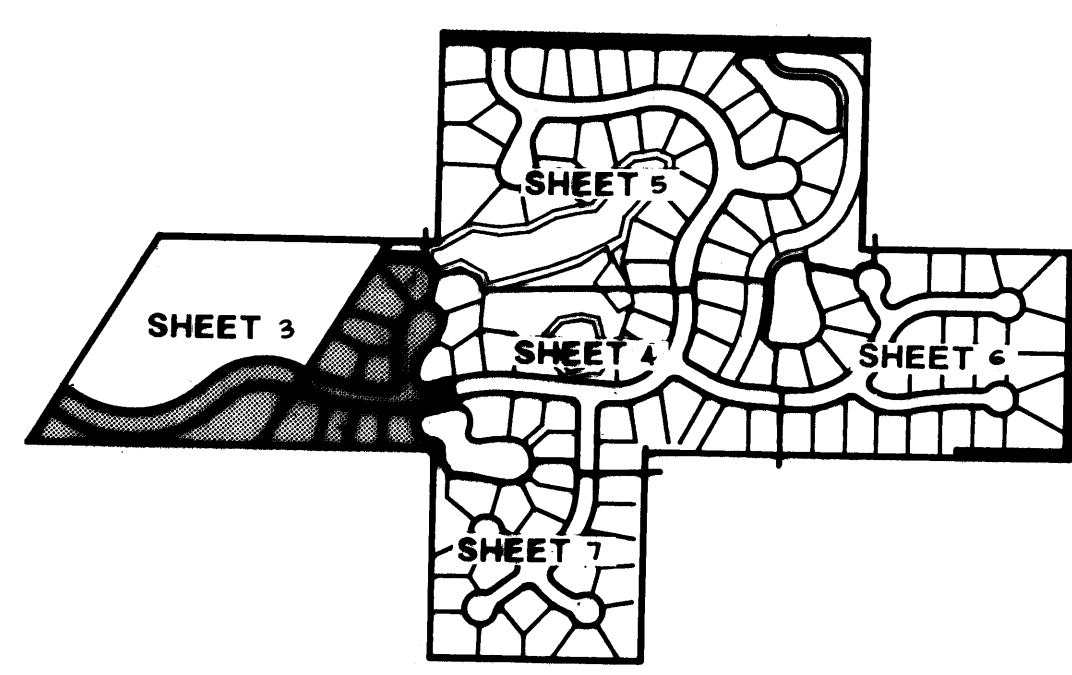
A PLANNED UNIT DEVELOPMENT

BEING A REPLAT OF LOTS 2,3,6,7, & 8, BLOCK 51, LOT 3, BLOCK 52, AND A PORTION OF LOT 5, BLOCK 51, AND A PORTION OF LOT 8, BLOCK 46, PLAT OF SAINT LUCIE INLET FARMS, PLAT BOOK 1, PAGE 98, PUBLIC RECORDS OF MARTIN COUNTY, FLORIDA
HANSON GRANT, MARTIN COUNTY, FLORIDA

Plat Book 12
Page 28



NOTE: THIS PLATTED PORTION OF ROAD ABANDONED BY MARTIN COUNTY.



KEY MAP
N.T.S.

NOTES
• DENOTES SET P.C.P.
■ DENOTES SET P.R.M.

ADAIR & BRADY, INC. CONSULTING ENGINEERS & LAND SURVEYORS STUART, FLORIDA				SOUTHWOOD, A P.U.D.	
Record Plat		FP S-077		SHEET 3 OF 7	
Dr. A.M.	F.B.	Scale	1"=50'	DATE	SEPT. 89
Ch. & W.	P.G.	Date	SEPT. 89	Job No.	87-520